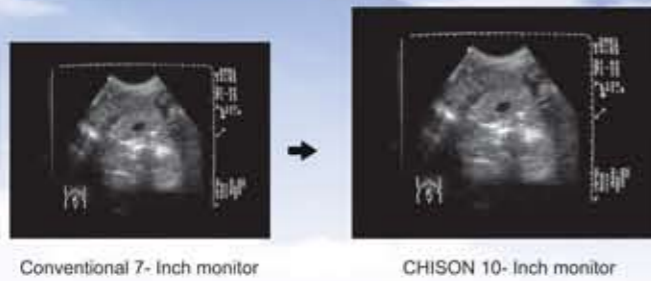


**1. EXCELLENT IMAGE : designed for your eyes' pleasure !**

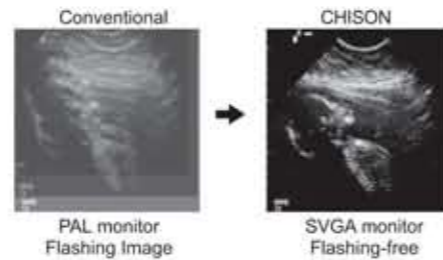


**10- Inch monitor**

- ◇ bigger pictures with more details
- ◇ for easy reading & more accurate diagnosis

**SVGA monitor**

- ◇ scan line by line, instead of scan by jumped line
- ◇ flashing - free and crisp image, reduce eye fatigue and protect your eyes



**2. ENHANCED MEMORY: let it remember for you !**

- ◇ **64 Frames CINE-memory** : can save and back play 64 continuous frames, allow you to choose the best image when you miss the right moment to freeze it

- ◇ **8 Frames Permanent Storage** :
  - Can save images for future comparason
  - Doctors don't need to bring printer when go for outdoor checks, images can be stored in the machine and printed in the clinic



**3. COMPACT & ERGONOMIC DESIGN : we know what you need to be dynamic ... flexible, handy and much more**

- ◇ Fold-up keyboard: Protects the monitor when go travelling
- ◇ Compact size: 42 x 27 x 25cm
- ◇ 7 kg lightweight: ready to go with you anywhere
- ◇ Special designed trolley: can put the unit and printer together on the mobile trolley



**4. SPECIAL DESIGN FOR VETERINARY: make your diagnosis more professional!**

- ◇ Wide application for VET
  - \* Equine,Bovine, Ovine, Canine, Feline
  - \* Pregnancy detection, abdominal, cardiology, small parts, tendon
- ◇ Special probes for VET
  - \* Each probe has 4 step multi-frequency, allows different penetration.
- ◇ Special software for VET (see page 4)



3.5MHz Convex C60  
2.5 / 3.5 / 4.0 / 5.0MHz



5.0MHz Linear Rectal L74605  
3.5 / 5.0 / 6.0 / 7.0MHz



5.0MHz Micro-convex C20605  
3.5 / 5.0 / 6.0 / 7.0MHz



2-probe connectors (optional)

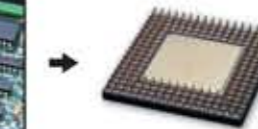
**5. INNOVATIVE TECHNOLOGY : secrets for outstanding performance !**

**1 chip replaces the entire circuit board**

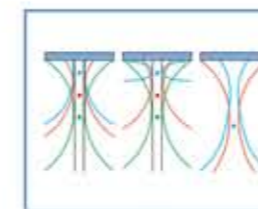
- ◇ answers why more reliable, efficient and compact, but at a lower cost



Conventional Circuit Board

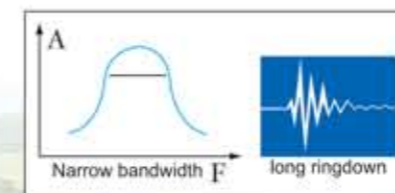


CHISON Chip (DSC\*, FPGA & SMT technology)

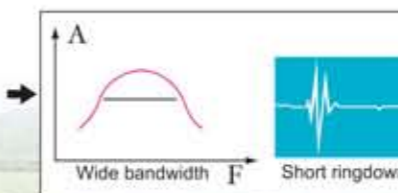


**CDA, CDF, DFS Techniques**

- ◇ ensures high resolution & scanning depth



Conventional



CHISON 600VET

**Wide bandwidth**

- ◇ high resolution ensures more details

\*DSC is CHISON patent product.  
Patent NO.ZL 00 2 40538.5.

**TECHNICAL SPECIFICATIONS**

|                         |  |
|-------------------------|--|
| Scanning Methods        | Electronic Convex / Electronic Linear / Electronic Micro-convex              |
| Applications for VET    | Abdominal, Reproduction, Small parts, Urology, Cardiology, Tendon            |
| Display Modes           | B, B/B, B/M and M (4 steps sweep speed selection)                            |
| Scanning Technique      | Real-time dynamic imaging : CDA, CDF, DFS                                    |
| Scanning Depth          | 240mm Max.(Depend on the probe types)  |
| Probe Frequency         | 2.5Mhz - 7Mhz (Depend on the probe types)                                    |
| No. of Probe Connectors | 1(standard), 2(optional)   |
| Gray Scales             | 256 levels   |
| Monitor                 | 10-Inch, SVGA flashing-free display  |
| Cine-memory             | 64 Frames (Optional)   |
| Permanent Storage       | 8 frames Max. (Optional)   |
| Focusing Methods        | 4-stage transmitting & receiving focus, Dynamic aperture control             |
| Image Processing        | IP selections: 4-steps   |
|                         | Frame averaging: 4 - steps   |
|                         | Linear averaging: 4 - steps  |
|                         | STC Curves: 8  |
|                         | TGC through Near, Far, and overall Gain controls                             |
| Image Reversing         | Left / Right, Up / Down, Positive / Negative                                 |
| Zooming                 | x 1.0, x 1.2, x 1.5, x 2.0 with scroll-up depth control                      |
| Measurements            | Distance, circumference, area, volume (bladder volume, thyroid volume)       |
| Reproduction software   | Bovine: BPD, CRL, Trunk Diameter   |
|                         | Equine: GA   |
|                         | Canine: GS, CRL, HD, BD  |
|                         | Feline: HD, BD   |
|                         | Ovine: BPD, CRL, Trunk, Diameter   |
| Body Mark               | 15 body marks  |
| Documentation           | Full screen documentation, hospital name, animal name, date / time           |
| Power Supply            | AC 230V ± 10%, 50Hz (standard); 110V ± 10%, 60Hz (depends on customer needs) |
| Weight                  | 7kg (net)  |
| Dimension               | 420mm x 270mm x 250mm  |
| Standard System         | Main unit + 3.5Mhz convex probe  |
| Options                 | 5.0Mhz Micro-convex probe (C20605), 5.0Mhz Linear probe (L74605),            |
|                         | 2-probe connectors ,Video printer, 64-frame cine memory card, trolley        |

Http://www.chison.com.cn

600VET 050117



**CHISON**

**CHISON MEDICAL IMAGING CO.,LTD.**

Address: NO.8, XIANG NAN ROAD, SHUO FANG, NEW DISTRICT, WUXI, CHINA 214142

Tel: 0086-510-85310197, 85310593, 85310937, 85311707

Fax: 0086-510-85310726

Http://www.chison.com.cn

E-mail: export@chison.com.cn

» For Veterinary Use Only, not for human

**CHISON-600VET**  
VETERINARY ULTRASOUND SYSTEM

Versatile Ultrasound Designed for VET!

